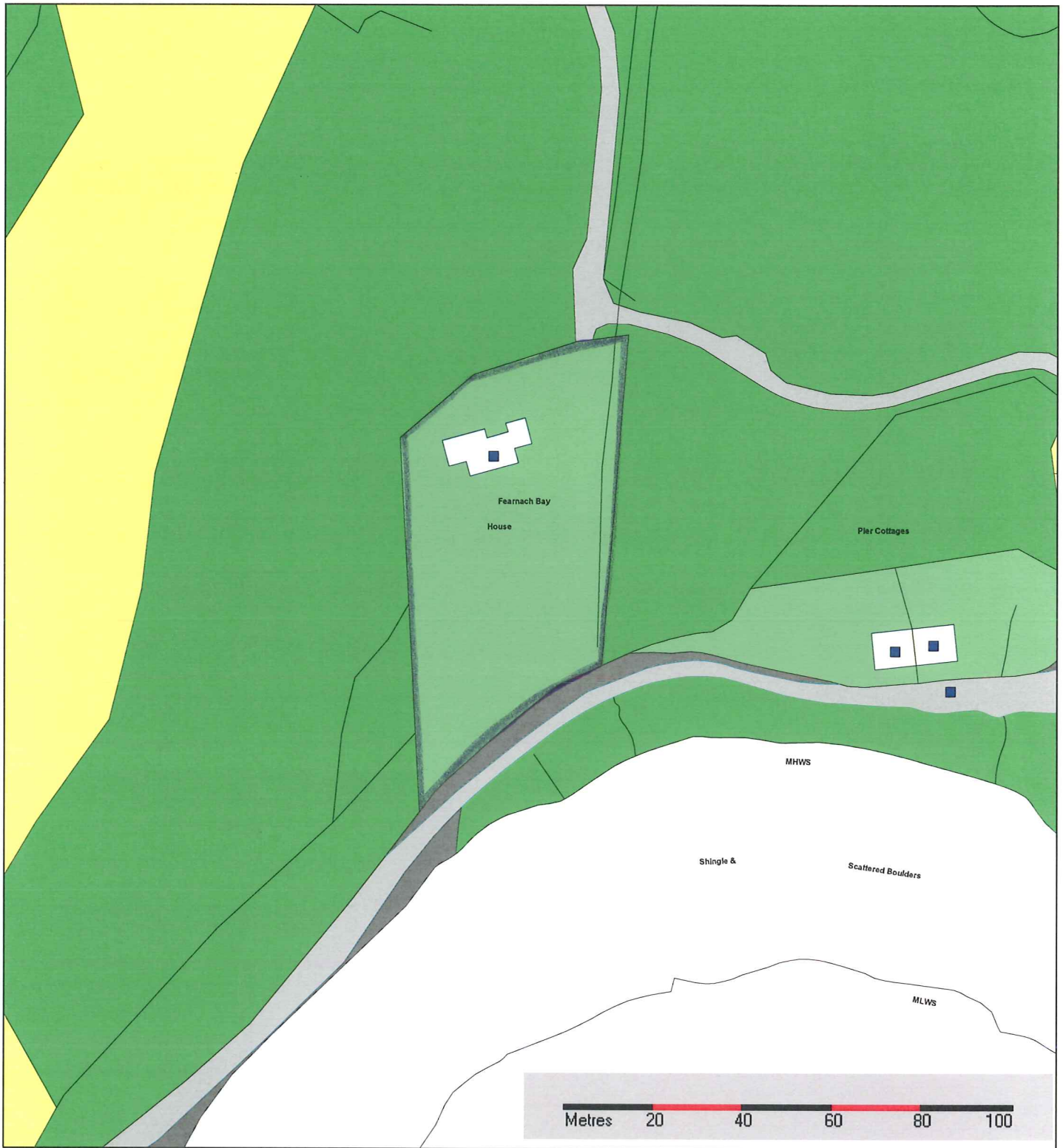


SITE 1 - FEARNACH BAY HOUSE

Argyll and Bute Council



This map is reproduced from Ordnance Survey material with the permission of Ordnance Survey on behalf of the Controller of Her Majesty's Stationery Office © Crown Copyright. Unauthorised reproduction infringes Crown Copyright and may lead to prosecution or civil proceedings. Argyll and Bute Council, licence number 100023368, 2005.

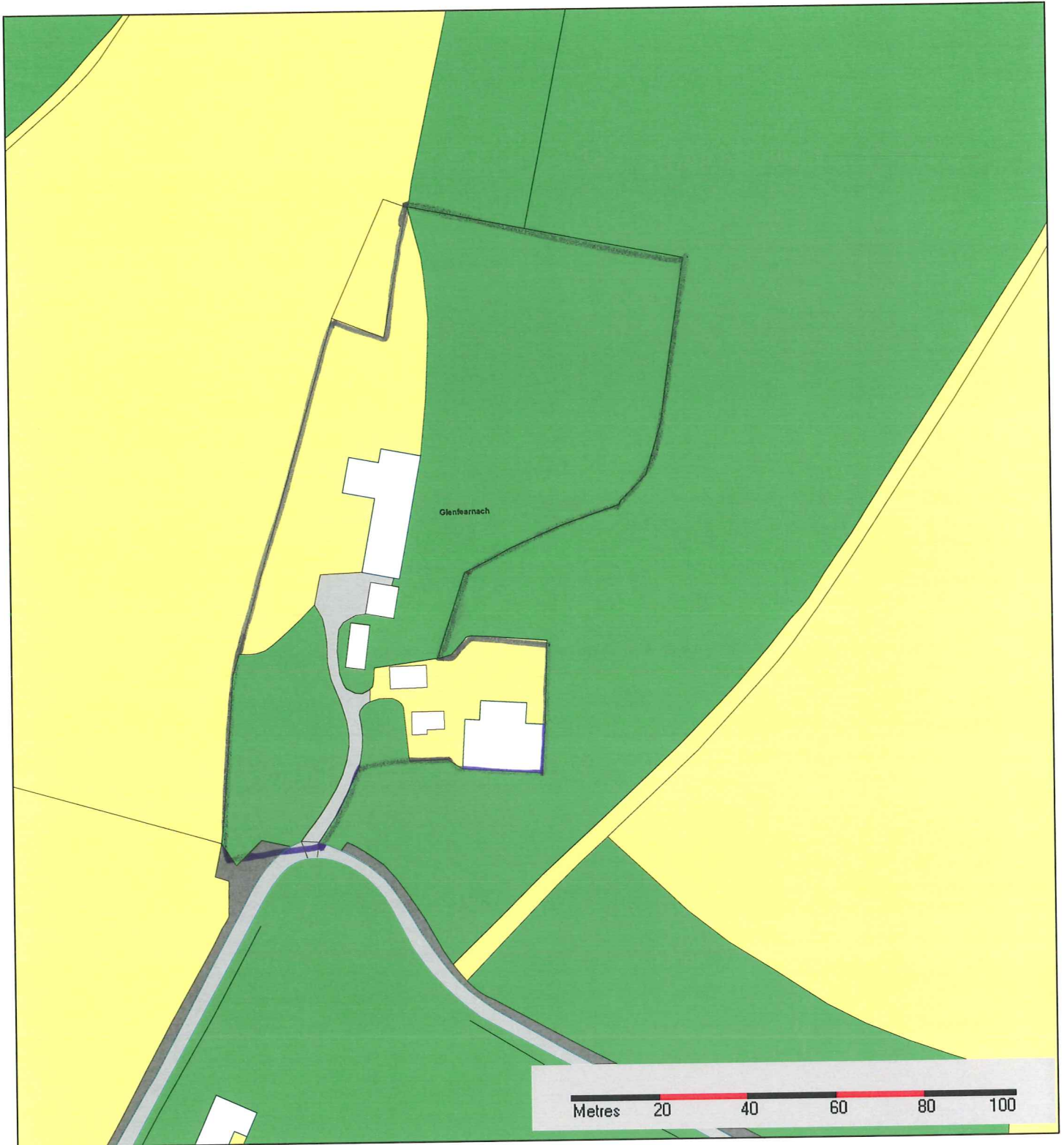
31 January 2013

SITE 2 - PIER COTTAGES



SITE 3 - GLENFEARNACH

Argyll and Bute Council



This map is reproduced from Ordnance Survey material with the permission of Ordnance Survey on behalf of the Controller of Her Majesty's Stationery Office © Crown Copyright. Unauthorised reproduction infringes Crown Copyright and may lead to prosecution or civil proceedings. Argyll and Bute Council, licence number 100023368, 2005.

07 February 2013

SITE 4 - HAZELWOOD COTTAGE

Argyll and Bute Council



This map is reproduced from Ordnance Survey material with the permission of Ordnance Survey on behalf of the Controller of Her Majesty's Stationery Office © Crown Copyright. Unauthorised reproduction infringes Crown Copyright and may lead to prosecution or civil proceedings. Argyll and Bute Council, licence number 100023368, 2005.

31 January 2013

SITE 5 - HORSE PARK

Argyll and Bute Council

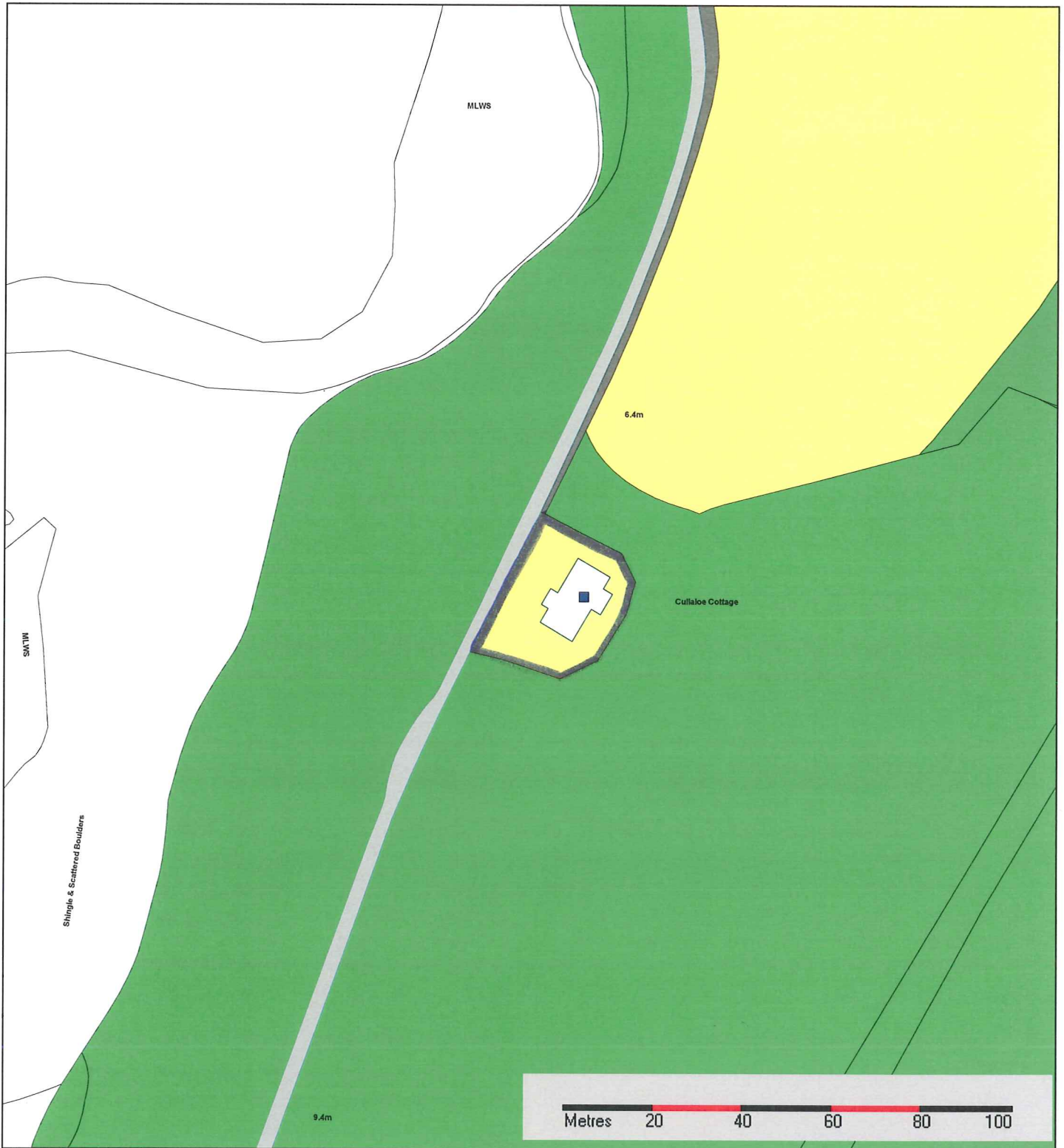


This map is reproduced from Ordnance Survey material with the permission of Ordnance Survey on behalf of the Controller of Her Majesty's Stationery Office © Crown Copyright. Unauthorised reproduction infringes Crown Copyright and may lead to prosecution or civil proceedings. Argyll and Bute Council, licence number 100023368, 2005.

31 January 2013

SITE 6 - CULLALOE COTTAGE

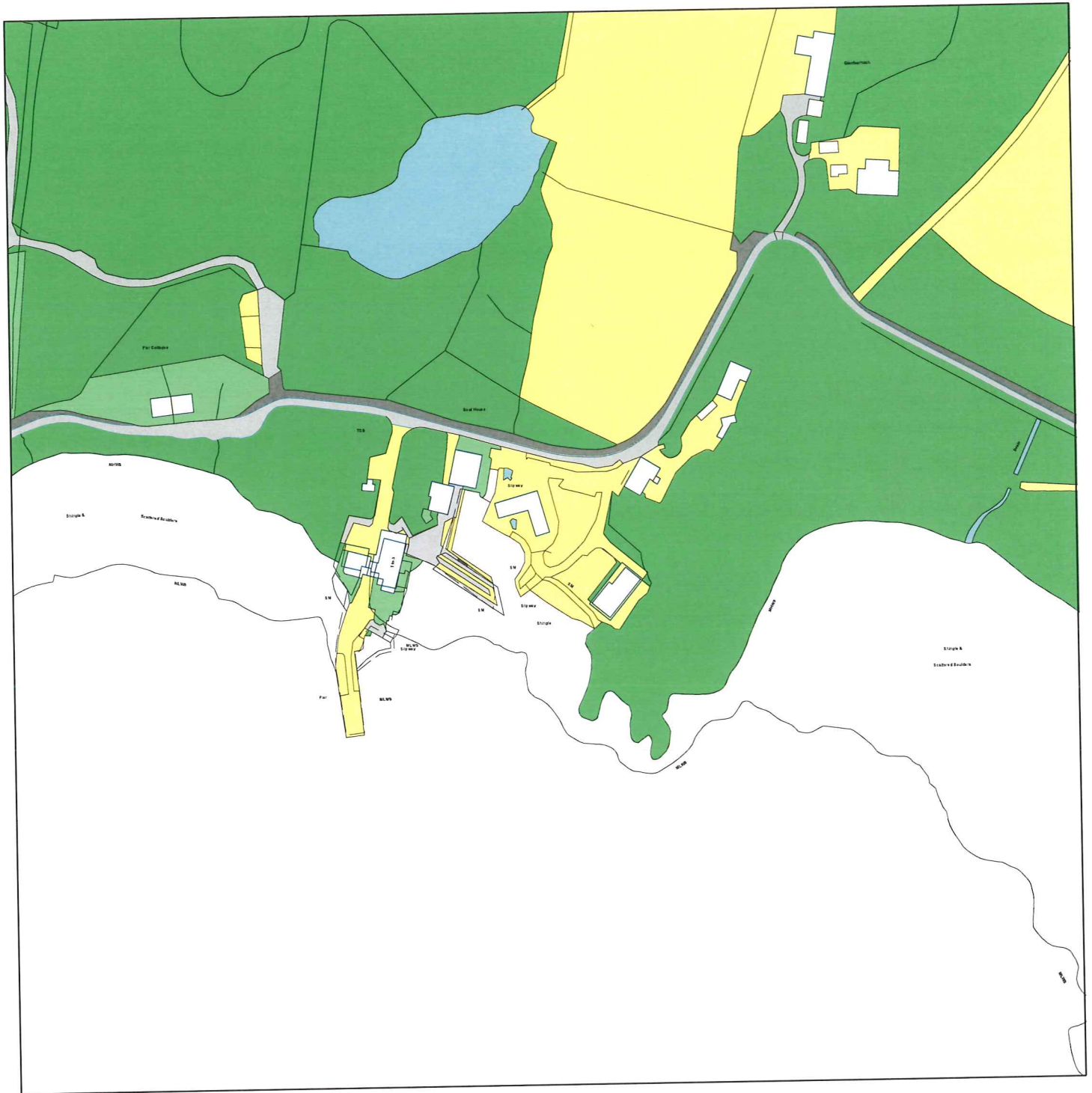
Argyll and Bute Council



This map is reproduced from Ordnance Survey material with the permission of Ordnance Survey on behalf of the Controller of Her Majesty's Stationery Office © Crown Copyright. Unauthorised reproduction infringes Crown Copyright and may lead to prosecution or civil proceedings. Argyll and Bute Council, licence number 100023368, 2005.

31 January 2013

INSET MAP 1 - MELFORT PIER LONG ESTABLISHED HOLIDAY DEVELOPMENT



INSET MAP 2 - MELFORT VILLAGE LONG ESTABLISHED HOLIDAY DEVELOPMENT



INSET MAP 3 - ARDENSTUR LONG ESTABLISHED HOLIDAY DEVELOPMENT

